

EFOR

CENTRIFUGALNI VENTILATOR MALE VELIČINE SA NAPRED ZAKRIVLJENIM LOPTICAMA

SMALL SIZE FORWARD CURVED BLADE

CENTRIFUGAL FAN



APLIKACIJE

Centrifugalni ventilatori malih dimenzija EFOR linije su dizajnirani za transport čistog vazduha i dima bez prašine, na temperaturi od 100°C. Koriste se u svim industrijskim primenama gde su potrebne male količine vazduha i srednje visok pritisak, na primer mašine alati, usisavanje ili usis u kanalizacijama, kapuljačama itd.

KONSTRUKCIJA

- Spiralne cevi od obojenog metalnog lima.
- Ravno zakrivljeno radno kolo sa jednim ulazom, od pocinkovanog čeličnog lima.
- Asinhroni trofazni ili jednofazni motor, IP 55, klasa izolacije F, servis S1, tip montaže B35 (EFOR 92-122-142 tip montaže B5), u skladu sa IEC/EEC.
- Raspored 5; direktno povezan.

TEHNIČKE SPECIFIKACIJE

- Transportisani vazduh: +100°C.
- Napon i frekvencija: - Monofazni (M) 230V-50 Hz. - Trofazni (T) 400V-50 Hz.
- Standardni ugao ispuštanja: LG 270.

NA ZAHTEV

- Nosač ventilatora: FF-EF.
- Verzija za visoke temperature: EFOR-AT.
- Verzija otporna na eksploziju: EFOR-ATEX.
- Zaštitne rešetke za ulaz i izlaz (dodatak) -
- Obavezno za slobodan vazduh.
- INOKS verzija: EFOR INOX

NAPOMENE

EFOR nisu pogodeni ERP direktivom 2009/125/EC. EFOR linija mora uvek biti povezana sa kanalima ili komponentama čiji padovi pritiska smanjuju protok tako da vrednosti potrošnje struje (A) budu unutar granica naznačenih na nazivnoj pločici motora.

APPLICATIONS

Small size centrifugal fans of EFOR line are designed to convey clean air and dustless smokes, at the temperature of 100°C. They are used in all industrial applications where small air volumes and medium-high pressure are required, for instance machines tool, suction or intake in canalizations, hoods, etc.

CONSTRUCTION

- Volute in painted metal sheet.
- Forward curved blade single inlet impeller, in galvanized steel sheet.
- Asynchronous three phase or single phase motor, IP 55, insulation class F, service S1, mounting type B35 (EFOR 92-122-142 mounting type B5), according to IEC/EEC.
- Arrangement 5; direct coupled.

TECHNICAL SPECIFICATIONS

- Conveyed air: +100°C.
- Voltage and frequency:
 - Mono-phase (M) 230V-50 Hz.
 - Three-phase (T) 400V-50 Hz.
- Standard discharge angle: LG 270.

ON REQUEST

- Fan support: FF-EF.
- High temperature version: EFOR-AT.
- Explosion proof version: EFOR-ATEX.
- Protection grid grids for inlet and outlet (accessory)
 - Obligatory for free air.
- INOX version: EFOR INOX

NOTES:

EFOR are not affected by ERP Directive 2009/125/EC. EFOR line must always be operated connected to ducts or components whose pressure drops reduce the flow rate so that the current consumption values (A) are within the limits indicated on the motor nameplate.

Standardna orijentacija LG 270 - Standard discharge angle LG 270

EFOR

UGLOVI ISPUŠTANJA - DISCHARGE ANGLES

| | | | | | | | | |
|----|------|-------|-------|--------|--------|--------|--------|--------|
| RD | RD 0 | RD 45 | RD 90 | RD 135 | RD 180 | RD 225 | RD 270 | RD 315 |
| LG | LG 0 | LG 45 | LG 90 | LG 135 | LG 180 | LG 225 | LG 270 | LG 315 |

EFOR

PERFORMANSE - PERFORMANCES

1 Mm H₂O = 9,8 Pa

Performanse prikazane na dijagramima odnose se na vazduh na temperaturi od 15 °C i nadmorskoj visini od 0 m., a dobijeni su u instalacijama tipa "D" u nedostatku mreže i pribora.

Performances shown in the selection diagrams refer to air at 15°C temperature and 0 mt a.s.l. altitude, and they were obtained in installation type "D" with no grid nor accessories.

2 POLA / POLES (3000 RPM)

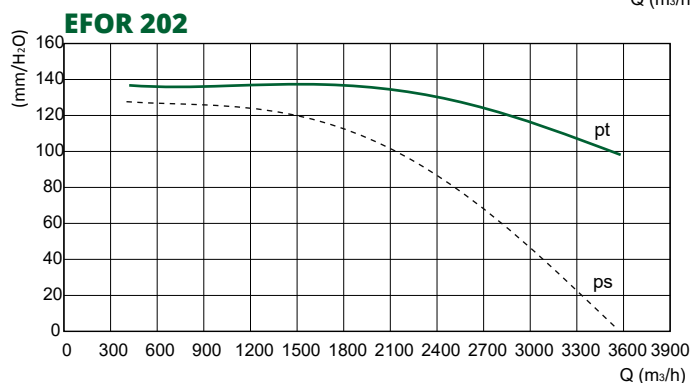
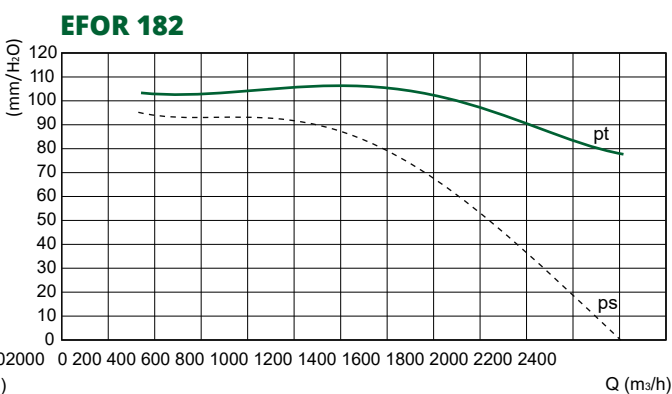
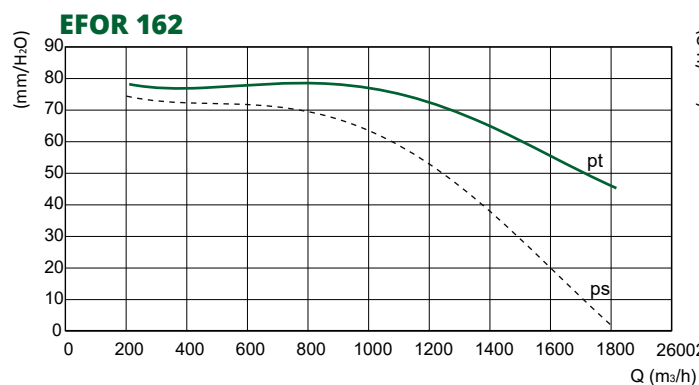
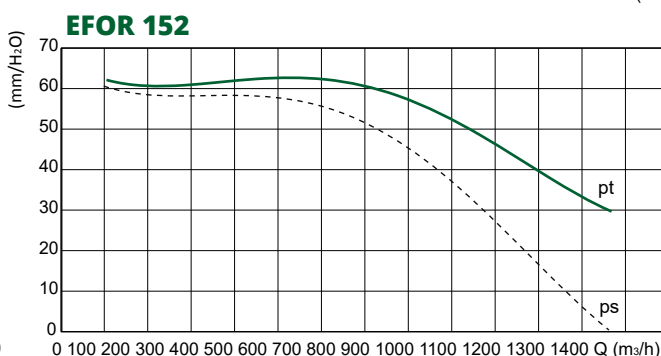
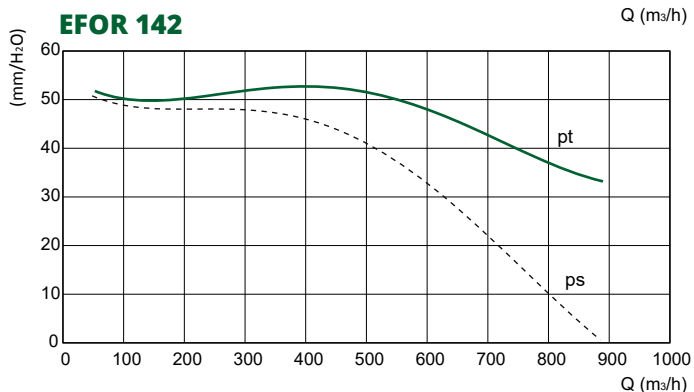
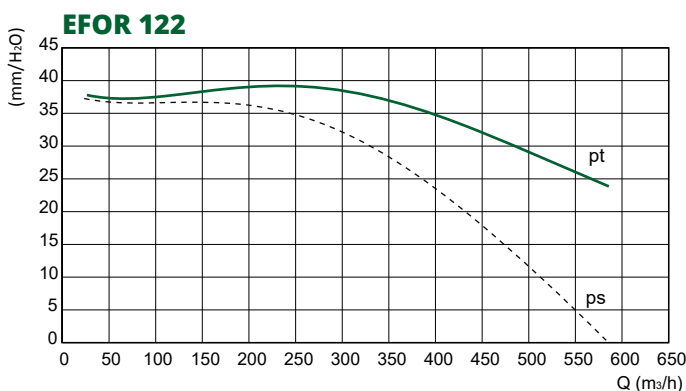
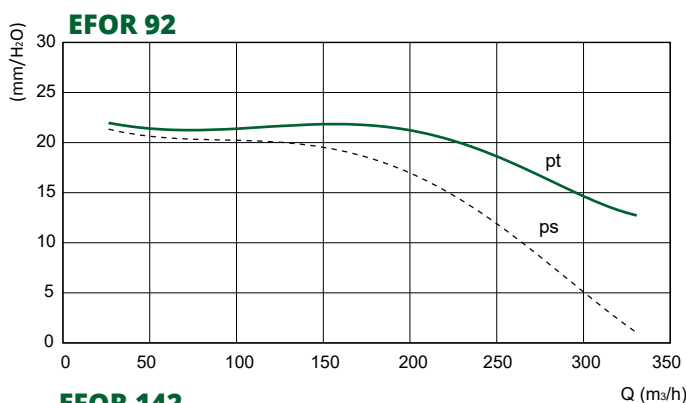
2 POLA / POLES (3000 RPM)

T: TROFAZNO / THREE-PHASE (3Ph-400V-50Hz)

M: MONOFAZNO / SINGLE-PHASE (1Ph-230V-50Hz)

| Model Model | Pm (kW) | In max (A) | Mot. (H) | Lp (dB(A)) |
|----------------|------------|---------------|-------------|---------------|
| 92 T | 0,09 | 0,29 | 56 | 60 |
| 122 T | 0,09 | 0,29 | 56 | 60 |
| 142 T | 0,18 | 0,65 | 63 | 68 |
| 152 T | 0,25 | 1,35 | 63 | 70 |
| 162 T | 0,55 | 1,9 | 71 | 71 |
| 182 T | 1,1 | 2,5 | 80 | 74 |
| 202 T | 1,5 | 3,1 | 90 | 77 |

| Model Model | Pm (kW) | In max (A) | Mot. (H) | Lp (dB(A)) |
|----------------|------------|---------------|-------------|---------------|
| 92 M | 0,09 | 0,8 | 56 | 60 |
| 122 M | 0,09 | 0,8 | 56 | 60 |
| 142 M | 0,18 | 0,85 | 63 | 68 |
| 152 M | 0,25 | 3,6 | 63 | 70 |
| 162 M | 0,55 | 5,2 | 71 | 71 |
| 182 M | 1,1 | 7,9 | 80 | 74 |



TOLERANCIJE: performanse i nivoi zvučne snage u okviru tolerancija dozvoljenih standardom DIN 24166 za klasu 2.

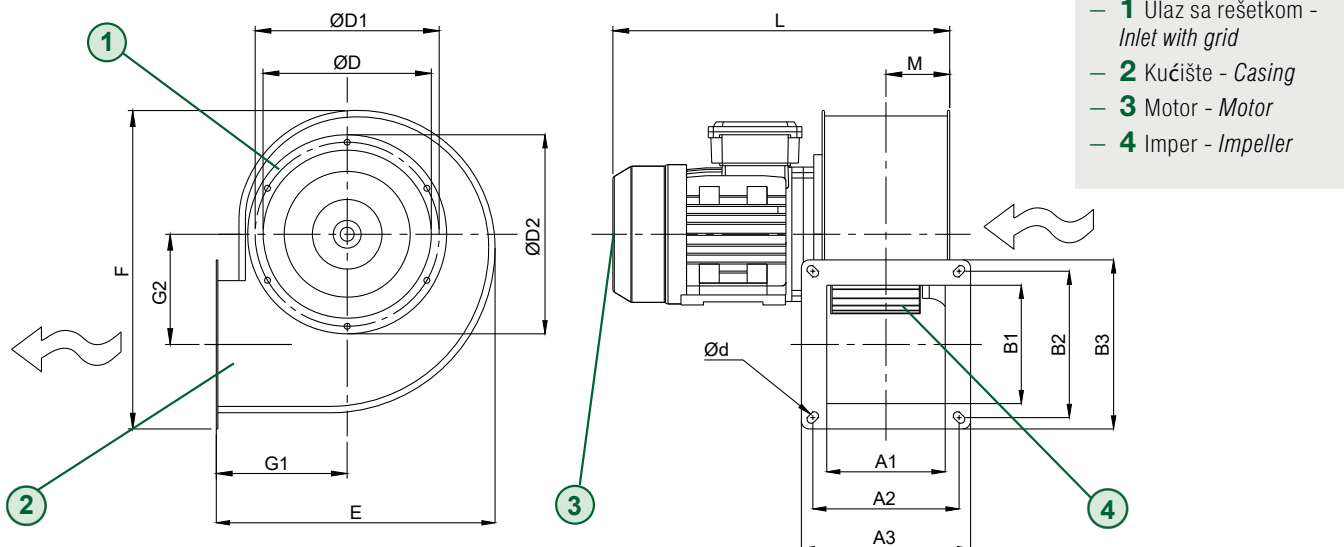
PAŽNJA: nivo zvučnog pritiska meren je u slobodnom polju na 1,5 m od ventilatora, pri maksimalnoj efikasnosti sa kanalskim ulazom i izlazom.

TOLERANCES: performances and sound power levels within the tolerances allowed by the DIN 24166 standard for Class 2.

ATTENTION: sound pressure level is measured in free field at 1.5m from the fan, at maximum efficiency with ducted inlet and outlet.

EFOR

DIMENZIJE - DIMENSIONS



- 1 Ulaz sa rešetkom - Inlet with grid
- 2 Kućište - Casing
- 3 Motor - Motor
- 4 Imper - Impeller

| Model Model | A1 | B1 | A2 | B2 | A3 | B3 | Ød | ØD | ØD1 | ØD2 | E | F | G1 | G2 | L | M | kg* |
|----------------|-----|-----|-----|-----|-----|-----|------|-----|-----|-----|-----|-----|-----|-----|-----|------|------|
| 92 | 72 | 73 | 92 | 84 | 110 | 100 | 7x13 | 107 | 120 | 128 | 180 | 200 | 81 | 66 | 260 | 40 | 4,5 |
| 122 | 76 | 81 | 96 | 96 | 115 | 115 | 8x9 | 128 | 136 | 150 | 220 | 250 | 99 | 84 | 270 | 43 | 5,2 |
| 142 | 90 | 90 | 112 | 112 | 130 | 130 | 8x10 | 140 | 155 | 170 | 240 | 270 | 109 | 97 | 300 | 48 | 6,8 |
| 152 | 111 | 111 | 137 | 137 | 160 | 160 | 8x13 | 155 | 175 | 185 | 270 | 300 | 131 | 100 | 320 | 60,5 | 7,8 |
| 162 | 119 | 119 | 147 | 147 | 170 | 170 | 8x13 | 169 | 185 | 200 | 285 | 325 | 132 | 110 | 340 | 64,5 | 10 |
| 182 | 124 | 124 | 147 | 147 | 170 | 170 | 8x13 | 185 | 200 | 225 | 315 | 360 | 144 | 130 | 390 | 67 | 15,3 |
| 202 | 139 | 139 | 171 | 171 | 200 | 200 | 8x15 | 205 | 220 | 250 | 350 | 405 | 164 | 144 | 420 | 74,5 | 20 |

Težina ventilatora u kg (kompletno sa motorom). - Weight of fan in kg (complete with motor).

Dimenzionalne tolerancije u ± 5 mm - Dimensional tolerances ± 5 mm

Dimenzije u mm - Dimensions in mm

EFOR

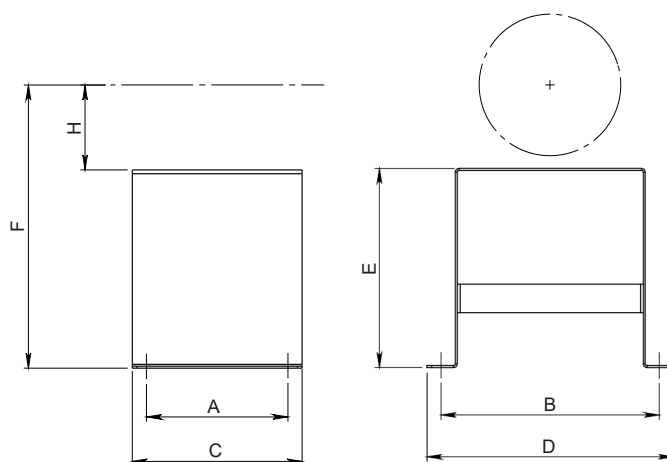
PRIBOR - ACCESSORIES

FF-EF: NOSAČ VENTILATORA FAN SUPPORT

| Model Model | A | B | C | D | E | F | Mot (H) | kg |
|----------------|-----|-----|-----|-----|-----|-----|---------|-----|
| 92* | 70 | 180 | 100 | 210 | 110 | 176 | 56 | 1,0 |
| 122* | | | | | | | | |
| 142* | 90 | 180 | 120 | 210 | 165 | 228 | 63 | 1,2 |
| 152 | | | | | | | | |
| 162 | 100 | 190 | 130 | 220 | 241 | 221 | 71 | 1,4 |
| 182 | 150 | 230 | 180 | 260 | 210 | 290 | 80 | 2,2 |
| 202 | | | | | | 300 | 90 | |

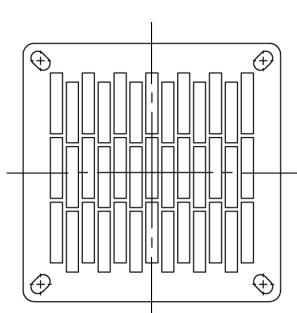
* Dostupno samo sa motorom tipa montaže B35.

* Only available with mounting type B35 motor.



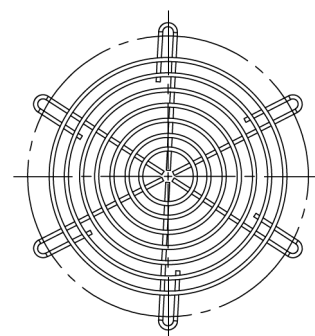
ZAŠTITNA MREŽA PROTECTION GRID

DODATNA OPREM
ACCESSORY: mandatory for free air.



OGP-EF

Zaštitna rešetka za utičnice
Outlet protection grid



IPG-EF

Zaštitna rešetka na ulazu
Inlet protection grid