

JP-DUCT

F 200 (200°C/120')
F 300 (300°C/60')
F 400 (400°C/120')



Aksijalni ventilator za sisteme parkiranja prema EN 12101-3

Axial fan for parking systems according to EN 12101-3

PRIMENE I PREDNOSTI

Impulsni ventilatori JP-DUCT se koriste u prisilnoj ventilaciji parkinga, za uklanjanje najčešćih zagađenja (npr. CO), a u slučaju nužde (požara), aktiviraju se kako bi sprečili i ograničili štetu na ljudima i objektima: stvaranjem puteva za bekstvo od toksičnog dima, sprečavanjem širenja u susjednim zonama itd.

Impulsni ventilator JP-DUCT ima glavnu karakteristiku da je bez kanala, nudeći niz prednosti kao što su:

- Značajna ušteda vremena i troškova instalacije. Ušteda u troškovima rada, mogućnost ventilacije ili odvoda vazduha samo određenih delova garaže, gde je to zaista potrebno. Jednostavnost uklanjanja sa posledičnim nižim troškovima održavanja ili premeštanja postrojenja.

JP-DUCT su projektovani i proizvedeni u skladu sa novom evropskom direktivom EN 12101-3, te su dobili sertifikat od strane nezavisnog sertifikacionog tela.

Ova linija je pogodna za S1 rad (kontinuirani rad) na temperaturi od 40°C i S2 rad u slučaju nužde (požara) na temperaturi od:

- 200°C tokom 120 minuta (F200)
- 300°C tokom 60 minuta (F300) testirano na 300°C/120°C
- 400°C tokom 120 minuta (F400).

Pojam dvostrukog rada je tačno preveden terminom „dvostruka namena“ koji je u ovom slučaju uveden Direktivom EN 12101-3.

DOMET

Ova linija se sastoji od 3 veličine, prečnik impelera: od 315 mm do 400 mm

- Motori su dvopolni, jednobrzinski, 2/4-polni, sa dvostrukim polaritetom i namotajem odvojaka.
- Dostupne verzije:
 - jednosmerni (JP-DUCT/U) reverzibilni protok vazduha (JP-DUCT/R). Standardno za rad S1 do +40°C - Rad za odvod dima S2 200°C/120' (F200) sertifikovano po EN 12101-3. 300°C/60' (F300) sertifikovano po EN 12101-3 (testirano na 300°C/120') 400°C/120' (F400) sertifikovano po EN 12101-3.

KONSTRUKCIJA

Kućiče od lima zaštićeno od atmosferskih uticaja.

Visoko efikasno radno kolo od livenog aluminijuma sa aerodinamičkim lopaticama i promenljivim uglom nagiba u mirnom položaju. Balansiranje prema ISO 1940.

Asinhroni trofazni elektromotor, IP 55, tip montaže B3, konstrukcija prema IEC/EEC direktivama, pogodan i sertifikovan za rad u S1 režimu (kontinuirani rad) do maksimalne temperature od 40°C i S2 režimu u slučaju požara za 200°C tokom 120 minuta ili 300°C tokom 120' ili 400°C tokom 120'.

Raspored 4 (radno kolo direktno povezano sa vratilom motora) 2 cilindrična prigušivača od pocinkovanog čeličnog lima direktno pričvršćena za ventilator. Sistem za fiksiranje na plafon.

TEHNIČKE SPECIFIKACIJE

Transportovani vazduh: čist, neabrazivan.

Napon i frekvencija:

- trofazni (T) 400V/50Hz.

NA ZAHTEV

Ulazni konus.

Zaštitna rešetka na ulazu i izlazni deflektor (JP-DUCT/U) ili 2 deflektora za reverzibilni režim (JP-DUCT/R).

Ožičeni servisni prekidač.

Ožičena spoljna razvodna kutija.

APPLICATIONS AND ADVANTAGES

Impulse fans JP-DUCT are used in the forced ventilation of car parks, to remove the most common pollutions (ex. CO) and in case of emergency (fire), it activates to prevent and restrict the damages to people and objects: creating escape routes from toxic smokes, preventing the propagation in the adjacent zones etc.

Impulse fan JP-DUCT has the main characteristic to be ductless, offering a series of advantages as:

- remarkable saving in times and costs of installation.
- saving in running costs, possibility to ventilate or extract only specific areas of the garage, where it is effectively required.
- Ease of removal with consequent lower costs of maintenance or displacement of the plant.

JP-DUCT have been designed and manufactured in accordance with the new European Directive EN 12101-3 obtaining the certification by an independent certification body.

This line is suitable to S1 service (continuous operation) at the temperature of 40°C and S2 service in case of emergency (fire) at the temperature of:

- 200°C for 120 minutes (F200)
- 300°C for 60 minutes (F300) tested 300°C/120'
- 400°C for 120 minutes (F400).

The notion of double operation is exactly translated by the term "dual purpose" introduced in this case by the Directive EN 12101-3.

RANGE

This line consists of 3 sizes, impeller diameter : from 315 mm to 400 mm

Motors are 2 poles single speed, 2/4 poles double polarity tapped winding.

Available versions :

- uni - directional (JP-DUCT/U) reversible airflow (JP-DUCT/R) . standard for operation S1 up to +40°C - Smoke exhaust operation S2 200°C/120' (F200) certified EN 12101-3. 300°C/60' (F300) certified EN 12101-3 (tested 300°C/120') 400°C/120' (F400) certified EN 12101-3.

CONSTRUCTION

Casing in metal sheet protected against the atmospheric agents.

High efficiency impeller in die cast aluminum alloy with airfoil blades and variable pitch angle in still position. Balancing according to ISO 1940.

Asynchronous three phase electrical motor, IP 55, mounting type B3, construction according to IEC/EEC directives, suitable and certified to operate in S1 service (continuous running) up to the maximum temperature of 40°C and S2 service in case of fire emergency for 200°C for 120 minutes or 300°C for 120' or 400°C for 120'.

Arrangement 4 (impeller directly coupled to the motor shaft)

N.2 cylindrical silencers in galvanized steel sheet directly flanged to the fan Ceiling fixing system.

TECHICAL SPECIFICATIONS

Conveyed air: clean, not abrasive.

Voltage and frequency:

- three-phase (T) 400V/50 Hz.

ON REQUEST

Inlet cone.

Inlet protection grid and outlet deflector (JP-DUCT/U) or n.2 deflectors for reversible (JP-DUCT/R).

Service switch wired.

External terminal box wired.

Model Model	Spinta thrust (N)	Protok Flow rate (m ³ /h)	Snaga motora Pm mptpr (kW)	Brzina vazduha Air speed (m/s)	In max (A)	Brzina speed rpm	Lp dB(A)	kg
JP-DUCT/U 312	27	4.600	0,75	17	1,5	2.820	62	67
JP-DUCT/U 312/4	27/6,7	4.600/2.300	0,8/0,2	17/8,5	2/0,6	2.820/1.400	62/44	67
JP-DUCT/U 352	35	6.000	1,1	17	2,3	2.820	66	75
JP-DUCT/U 352/4	35/8,7	6.000/3.000	1,1/0,25	17/8,5	2,4/0,7	2.810/1.400	66/48	75
JP-DUCT/U 402	61	9.000	1,5	20	3,5	2.850	69	90
JP-DUCT/U 402/4	61/15,30	9.000/4500	1,5/0,35	20/10	3,5/1,2	2.850/1.452	69/50	90
JP-DUCT/U 402	75	10.000	2,2	22	4,5	2.845	71	92
JP-DUCT/U 402/4	75/19	10.000/5.000	2,2/0,5	22/11	4,6/1,5	2.845/1.420	71/51	92
JP-DUCT/R 312	20	4.000	0,75	14,6	1,5	2.820	62	68
JP-DUCT/R 312/4	20/5	4.000/2.000	0,8/0,2	12/6,15	1,9/0,6	2.820/1.400	62/44	68
JP-DUCT/R 352	35	6.000	1,1	17	2,3	2.820	66	76
JP-DUCT/R 352/4	35/8,7	6.000/3.000	1,1/0,25	17/8,5	2,4/0,7	2.810/1.400	66/48	76
JP-DUCT/R 402	54	8.500	1,5	18,7	3,5	2.850	69	92
JP-DUCT/R 402/4	54/13,5	8.500/4.250	1,5/0,35	18,7/9,35	3,5/1,2	2.850/1.425	69/50	92
JP-DUCT/R 402	63	9.300	2,2	20	4,5	2.845	71	94
JP-DUCT/R 402/4	63/16	9.300/4.650	2,2/0,6	20/10	4,6/1,5	2.845/1.420	71/51	94

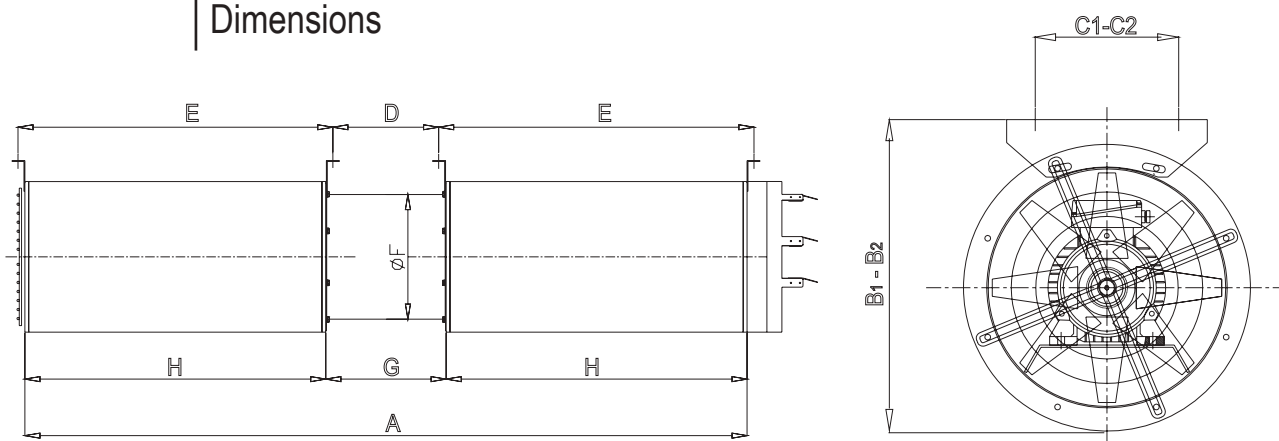
Performanse vezane za verzije F200 i F300 / Performances related to F200 and F300 versions

Tolerancije: performanse i nivoi zvučne snage u okviru tolerancija dozvoljenih standardom DIN 24166 za klasu 2.

Tolerances: performance and sound power levels within the tolerances allowed by the DIN 24166 standard for Class 2.

Pažnja: nivo zvučnog pritiska se meri u slobodnom polju na 3 m od ventilatora, u bilo kom pravcu.

Attention: sound pressure level is measured in free field at 3 m from the fan, in any direction.



Model	A	B ₁ *	B ₂	C ₁ *	C ₂	D	E	F	G	H	I
JP-DUCT 310	1.520	410	465	360	250	212	-	315	260	630	80
JP-DUCT 350	1.660	445	510	400	250	212	-	360	260	700	80
JP-DUCT 400	2.000	495	560	450	250	352	848	410	400	800	80

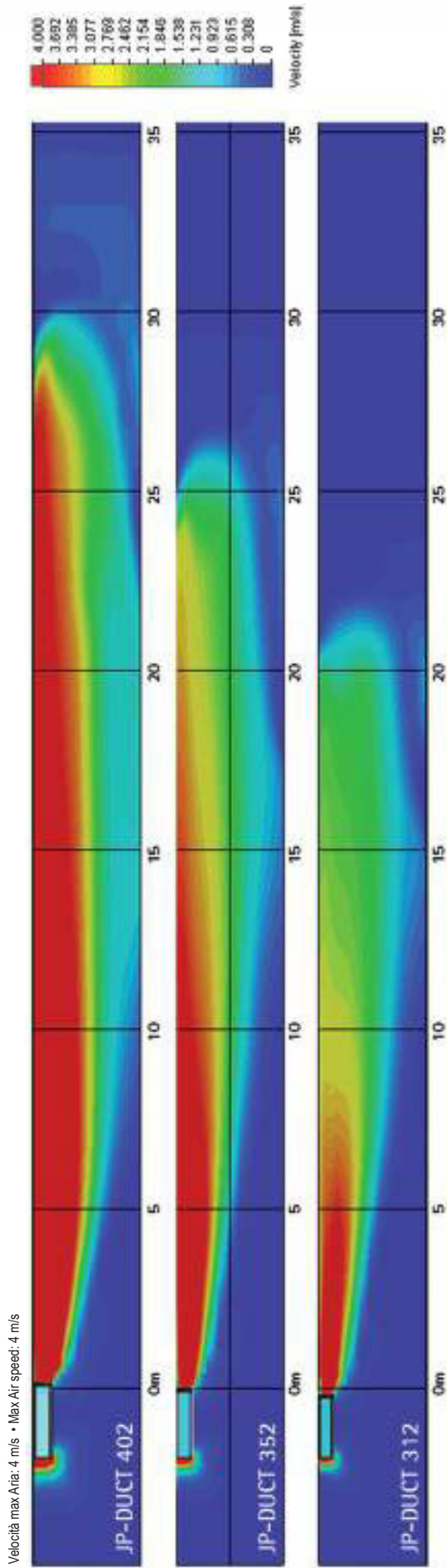
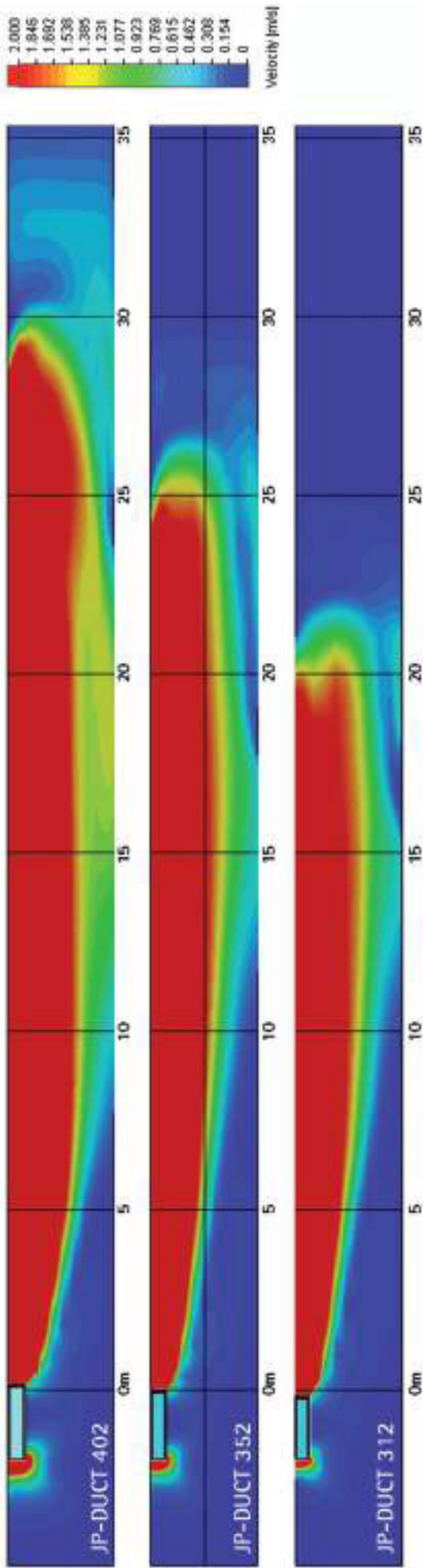
Dimenzije u mm/Dimensions in mm - Tolerancija ± 5 mm/Tolerance ± 5 mm

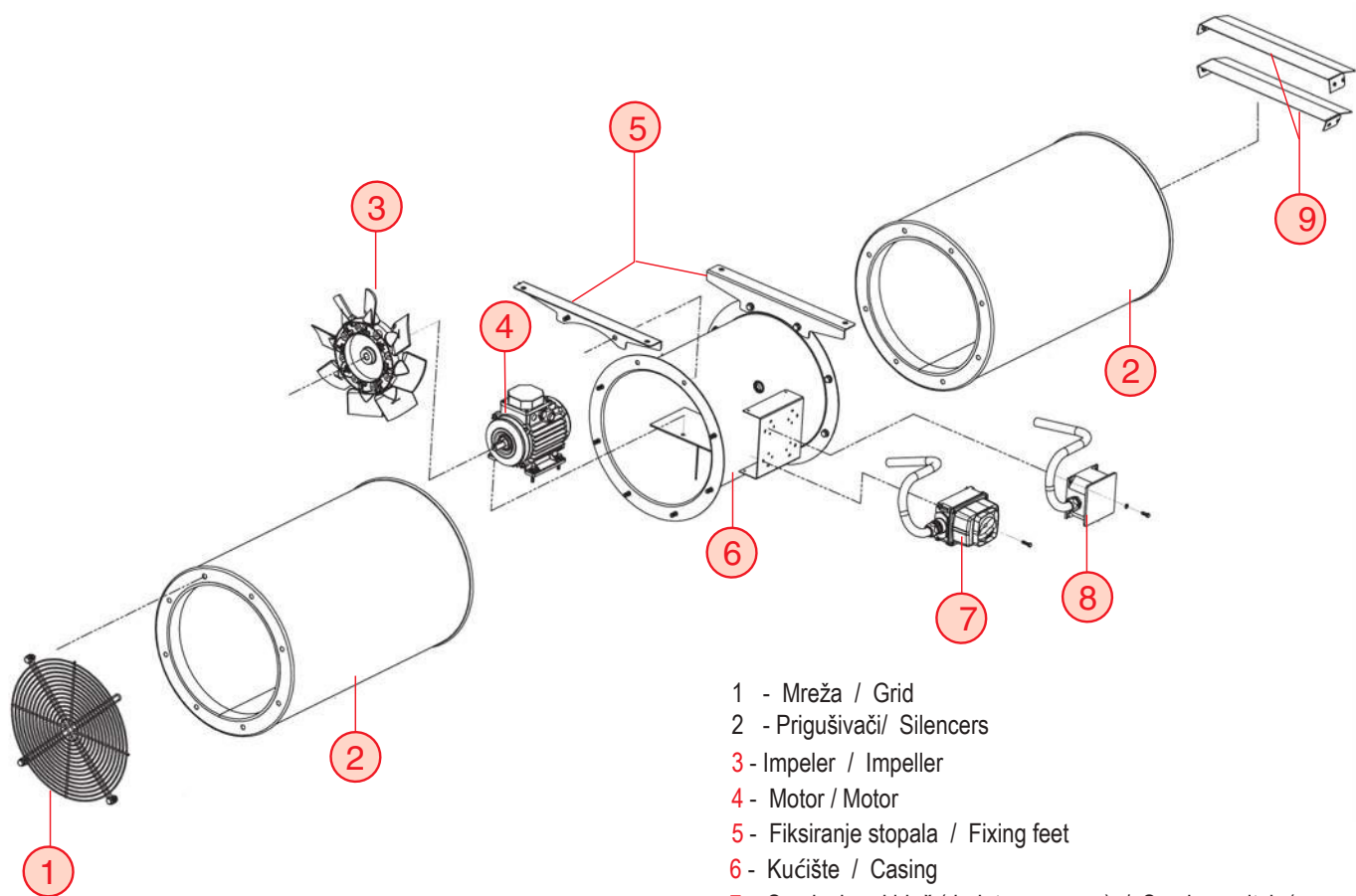
* Tanka verzija - Slim version

Discharge patterns

Maksimalna brzina vazduha: 2 m/s • Max.Air speed: 2 m/s

Podaci se dobijaju CFD analizom • Data are obtained by CFD Analysis





- 1 - Mreža / Grid
- 2 - Prigušivači/ Silencers
- 3 - Impeler / Impeller
- 4 - Motor / Motor
- 5 - Fiksiranje stopala / Fixing feet
- 6 - Kućište / Casing
- 7 - Servisni prekidač (dodatna oprema) / Service switch (accessory)
- 8 - Spoljna priključna kutija / Outer terminal box
- 9 - Deflektori / deflectors

