

# RING-HT

**AKSIJALNI VENTILATOR ZA ODVOD DIMA  
U SKLADU SA EN 12101-3**  
SMOKE EXHAUST RING AXIAL FAN ACCORDING  
TO EN 12101-3

**F200**

**F300**

**F400**



## APLIKACIJE

Ventilatori RING-HT linije su dizajnirani za upotrebu u svim postrojenjima gde je propisana potreba za garantovanjem odvoda dima u okruženjima kao što su parkinzi, trgovački centri, bolnice, pozorišta, muzeji, zgrade itd. RING-HT ventilatori su projektovani i proizvedeni u skladu sa Evropskom direktivom EN 12101-3, dobijajući sertifikat od ovlašćenog autonomnog sertifikacionog tela. Ova linija je pogodna za rad kontinuirano na temperaturi od 40°C i u slučaju nužde (požara) na temperaturi od: 400°C tokom 120 minuta (F400). Ovaj koncept dvostrukog rada je tačno preveden terminom „dvostruka namena“ uvedenim u specifikaciju normom EN 12101-3.

## DOMET

Ova linija se sastoji od 9 veličina sa prečnikom impelera od 400 do 1000 mm.

## KARAKTERISTIKE

RING-HT liniju karakteriše upotreba posebnih komponenti (motor, impeler i kućište), različitih od standardne proizvodnje, pogodnih da garantuju tešku i neophodnu upotrebu za koju su projektovane: da izdrže visoke temperature kako bi garantovale mogućnost spasavanja ljudi u požaru.

## KONSTRUKCIJA

- Kućište RING, sa širokom okruglom mlaznicom, od čeličnog lima obojenog epoksidom.
- Zaštitna rešetka na strani motora, proizvedena u skladu sa UNI EN ISO 12499 i zaštićena od atmosferskih uticaja.
- Impeler sa visoko efikasnim aerodinamičkim lopaticama, promenljivim uglom nagiba u mirujućem položaju, od livenog aluminijuma. Balansiranje u skladu sa standardom UNI ISO 21940-11.
- Asinhroni trofazni elektromotor, IP 55, montaža B3, konstrukcija u skladu sa IEC/EEC normama, pogodan i sertifikovan za rad na temperaturi od 40°C u kontinuiranom režimu i 400°C tokom 120 minuta u slučaju požara.
- Raspored 4 (impeler direktno spojen sa vratilom motora).

## TEHNIČKE SPECIFIKACIJE

RING-HT

- Transporisana tečnost: čista ili blago prašnja, neabrazivna.
- Napon: trofazni (T) 400V – 3ph – 50Hz.
- Smer tečnosti: od motora do impelera (A) FMG.

## VERZIJE

- RING-HT dr: kućište sa dvostrukom okruglom mlaznicom.
- RING-HT sr: kućište sa jednom okruglom mlaznicom.

## PRIBOR

- Ravna zaštitna rešetka (FPG-DU).
- (Neophodno za upotrebu u otvorenom prostoru)
- Kvadratna ploča (SQ).
- Nožice za fiksiranje (FF-RI)

## NA ZAHTEV

- Performanse se razlikuju od kataloga.
- Verzije sa protokom vazduha od impelera do motora, položaj B (FGM).

## APPLICATIONS

*The fans of the RING-HT line have been designed to be employed in all the plants where it is prescribed the necessity to guarantee the smoke extraction in environments as car parks, commercial centers, hospitals, theatres, museums, buildings etc.*

*RING-HT fans have been designed and manufactured according to the European Directive EN 12101-3 obtaining the certification from an authorized autonomous certification body. This line is suitable to work in continuous at the temperature of 40°C and in case of emergency (fire) at the temperature of: 400°C for 120 minutes (F400). This concept of double operation is exactly translated by the term “dual purpose” introduced in the specific by the EN 12101-3 norm.*

## RANGE

*This line consists of 9 sizes with impeller diameter from 400 up to 1000 mm.*

## ADVANTAGES

*RING-HT line is characterized by the use of special components (motor, impeller and casing), different from the standard production, suitable to guarantee the heavy and essential service for which they are designed: to withstand to the high temperatures to guarantee the possibility of salvation for the people involved in a fire.*

## COSTRUCTION

- RING casing, with wide round shaped nozzle, in epoxy painted steel sheet.
- Motor side protection grid, manufactured according to UNI EN ISO 12499, and protected against the atmospheric agents.
- Impeller with high efficiency airfoil blades, variable pitch angle in still position, in cast aluminum. Balancing according UNI ISO 21940-11 norm.
- Asynchronous three phase electric motor, IP 55, mounting B3, construction conformed to IEC/ EEC norms, suitable and certified to work at the temperature of 40°C in continuous service and 400°C for 120 minutes in case of fire emergency.
- Arrangement 4 (impeller directly coupled with motor shaft).

## TECHNICAL SPECIFICATIONS

RING-HT

- Conveyed Fluid: clean or slightly dusty, not abrasive.
- Voltage: three phase (T) 400V – 3ph – 50Hz.
- Fluid direction: from motor to impeller (A) FMG.

## VERSIONS

- RING-HT dr: casing with double round shaped nozzle.
- RING-HT sr: casing with single round shaped nozzle.

## ACCESSORIES

- Flat protection grid (FPG-DU). (Necessary for use in free air)
- Square panel (SQ).
- Fixing feet (FF-RI)

## ON REQUEST

*Performances different from the catalogue.  
Versions with air flow from impeller to motor, position B (FGM).*

Performanse prikazane na dijagramima selekcije odnose se na protok vazduha od impelera do vazduha na temperaturi od 15°C i 0 m nadmorske visine, i dobijene su kod tipa instalacije „D“ bez rešetke i dodatne opreme.

Performance shown in the selection diagrams refer to the airflow from impeller to air at 15°C temperature and 0 mt a.s.l. altitude, and they were obtained in installation type "D" with no grid nor accessories.

### 4 POLA / POLES (1500 RPM)

#### TROFAZNO / THREE-PHASE (3Ph-400V-50Hz)

Model Model	Brzina protoka Flow rate (m <sup>3</sup> /h)	Pm (kW)	In max (A)	Mot. (H)	Lp (dB(A))	Kg
454/A T	7.200	0,55	1,5	80	66	35
504/A T	9.200	0,75	2	80	70	41
564/A T	10.500	0,75	2	80	71	45
564/B T	13.000	1,1	2,5	90	72	51
634/A T	15.800	1,5	3,8	90	76	58
714/A T	17.800	2,2	4,6	100	77	82
804/A T	22.200	3	6,5	100	78	94
804/B T	27.200	4	8,2	112	79	105
804/C T	32.300	5,5	11	132	80	125
904/A T	35.400	5,5	11	132	85	142
904/B T	42.700	7,5	15	132	86	153
1004/A T	49.000	7,5	15	132	88	175
1004/B T	54.300	9,2	19	132	89	185
1004/C T	59.600	11	21	160	89	230

### 6 POLA / POLES (1000 RPM)

#### TROFAZNO / THREE-PHASE (3Ph-400V-50Hz)

Model Model	Brzina protoka Flow rate (m <sup>3</sup> /h)	Pm (kW)	In max (A)	Mot. (H)	Lp (dB(A))	Kg
806/A T	21.000	1,5	4	100	69	95
906/A T	30.500	2,2	5	112	75	110
1006/A T	36.300	3	7	132	80	162

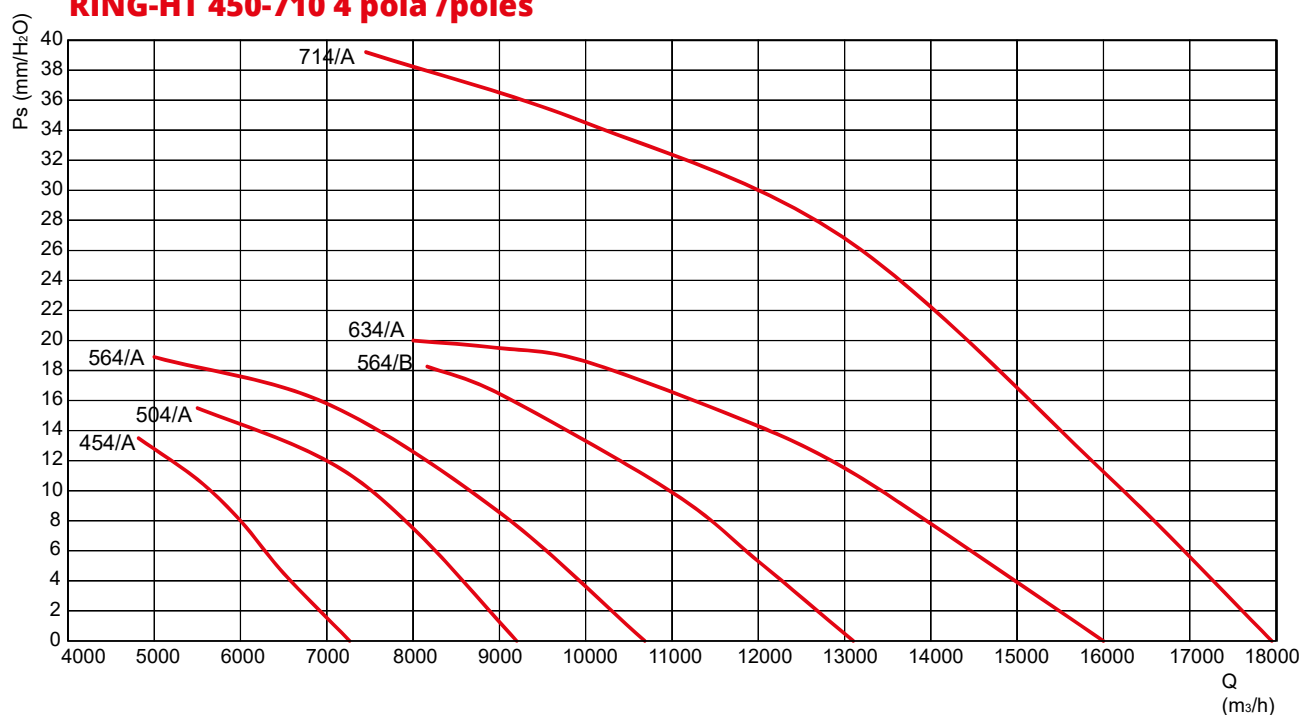
PAŽNJA: nivo zvučnog pritiska se meri u slobodnom prostoru na 3 m od ventilatora, u bilo kom smeru, sa ulazom i izlazom u kanalu.

TOLERANCIJE: performanse i nivoi zvučne snage unutar tolerancija dozvoljenih standardom DIN 24166 za klasu 2

ATTENTION: sound pressure level is measured in free field at 3 m from the fan, in any direction, with ducted inlet and outlet

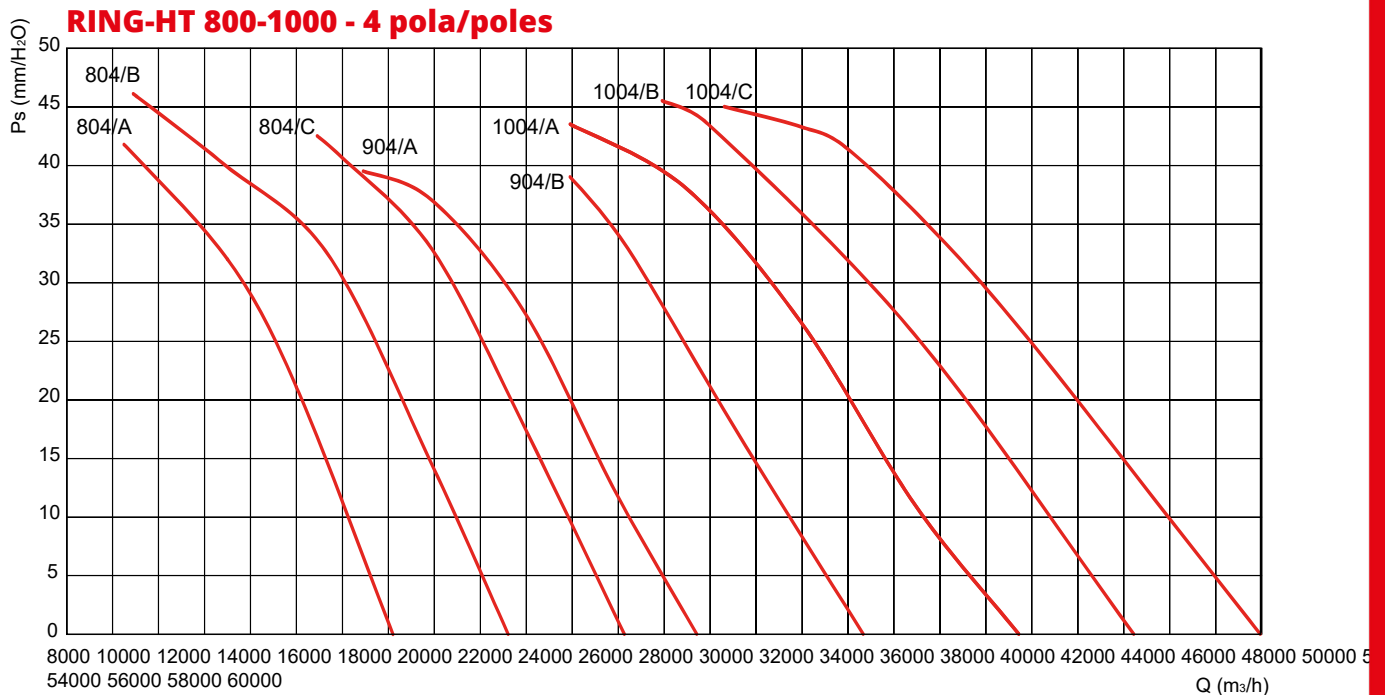
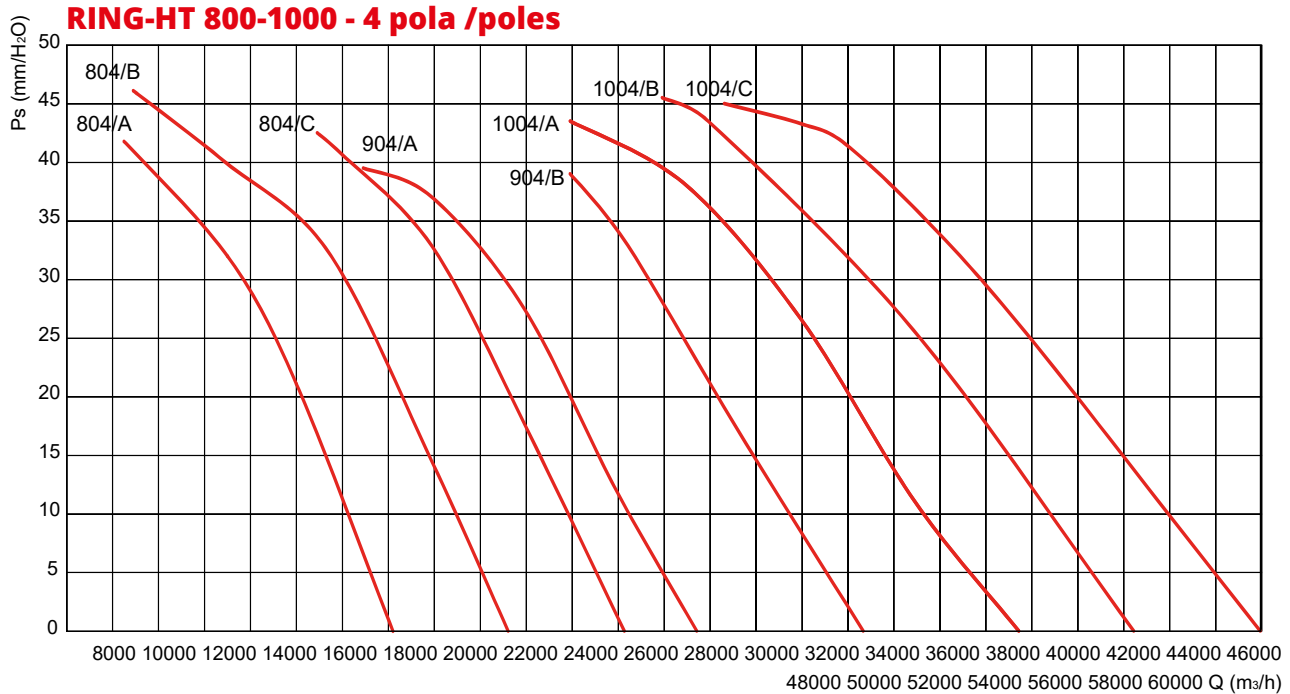
TOLERANCES: performances and sound power levels within the tolerances allowed by the DIN 24166 standard for Class 2.

### RING-HT 450-710 4 pola /poles



Performanse prikazane na dijagramima selekcije odnose se na protok vazduha od impelera do vazduha na temperaturi od 15°C i 0 m nadmorske visine, i dobijene su kod tipa instalacije „D“ bez rešetke i dodatne opreme.

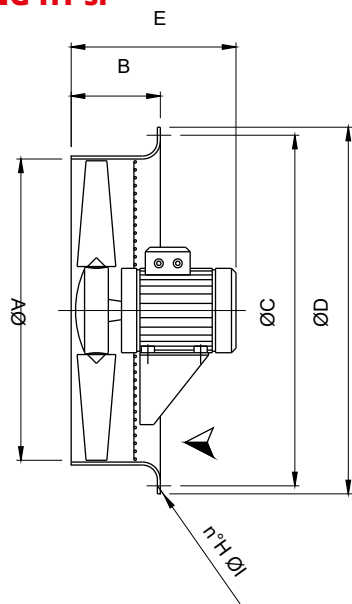
*Performance shown in the selection diagrams refer to the airflow from impeller to air at 15°C temperature and 0 mt a.s.l. altitude, and they were obtained in installation type "D" with no grid nor accessories.*



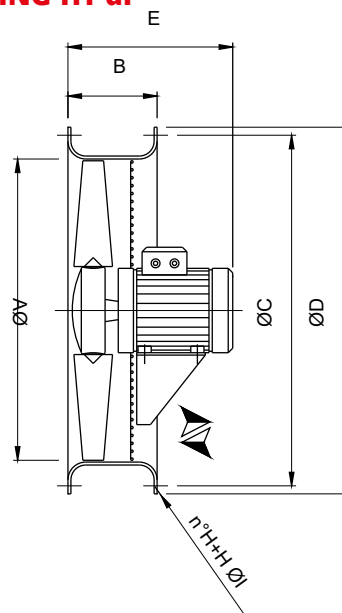
# RING-HT

## DIMENZIJE - DIMENSIONS

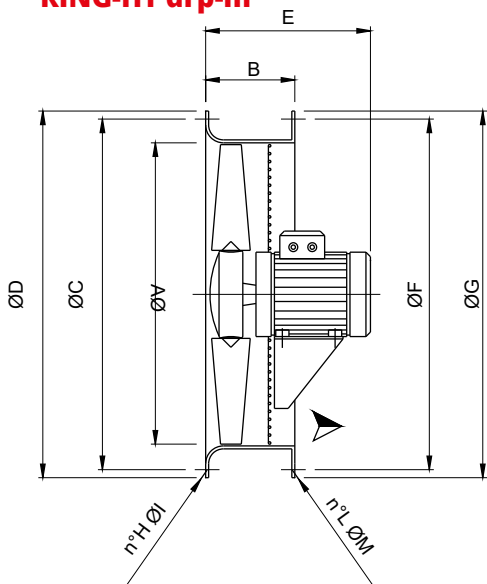
**RING-HT sr**



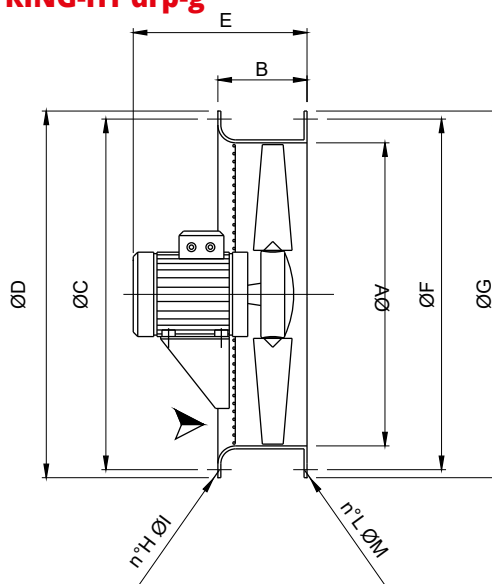
**RING-HT dr**



**RING-HT drp-m**



**RING-HT drp-g**



Model Model	ØA	B(sr)	B(dr)	B(drp)	ØC	ØD	E(*)	ØF	ØG	n°H	Øl	n°L	ØM
31	310	135	150	150	365	390	400	355	390	4	8	8	10
35	360	135	150	150	430	455	400	395	430	4	8	8	10
40	410	135	150	150	480	510	400	450	480	4	10	8	12
45	460	150	150	150	535	560	400	500	530	4	10	8	12
50	510	150	150	150	590	620	400	560	595	8	10	12	12
56	570	180	180	180	645	680	490	620	655	8	10	12	12
63	640	180	180	180	720	750	510	690	725	8	10	12	12
71	710	180	180	180	780	816	530	770	805	8	12	16	12
80	810	200	200	200	880	915	670	860	900	8	12	16	12
90	910	250	250	250	980	1015	780	970	1010	16	12	16	16
100	1010	250	250	250	1080	1115	810	1070	1110	16	12	16	16
112	1130	250	250	250	1226	1250	1070	1190	1230	16	12	20	16
125	1260	260	260	260	1350	1380	1120	1320	1360	16	12	20	16

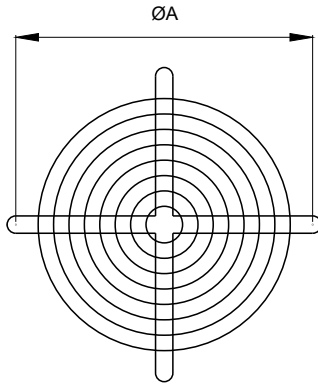
Dimenzionalne tolerancije u ± 5 mm - Dimensional tolerances ± 5 mm

# RING-HT

## PRIBOR - ACCESSORIES

### FPG-RI: ZAŠTITNI ŠTITNIK SA STRANE IMPELERA

Koristi se da bi se sprečio ulazak ptica ili pacova sa strane impelera i da bi se zaštitio od slučajnog kontakta sa rotirajućim impelerom. Proizvodi se od čelične šipke u skladu sa važećim bezbednosnim direktivama. Mora se navesti ako je potrebno za RING-sr (PG-P/RI sr) ili RING-dr (FPG-RI dr). (Neophodno za upotrebu na otvorenom vazduhu).

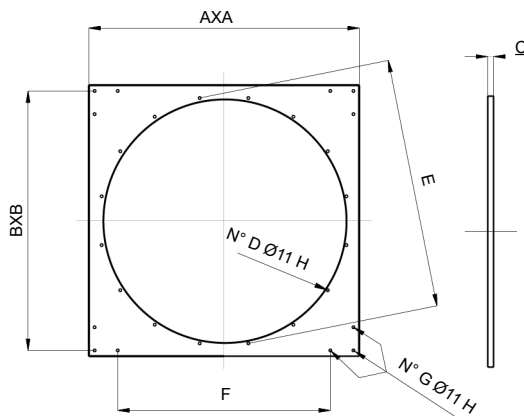


### FPG-RI: IMPELLER SIDE PROTECTION GUARD

To be used to avoid the intrusion, from the impeller side, of birds or rats and to preserve from the casual contact with the rotating impeller. It is manufactured in steel rod according to the actual safety directive. Shall be specified if required for RING-sr (PG-P/RI sr) or RING-dr (FPG-RI dr). (Necessary for use in free air).

Model Model	ØA	kg
FPG-RI 40	450	0,9
FPG-RI 50	560	1,3
FPG-RI 56	620	1,5
FPG-RI 63	690	1,8
FPG-RI 71	770	2,5
FPG-RI 80	860	3
FPG-RI 90	970	4
FPG-RI 100	1070	5

### SQ: KVADRATNI PANEL

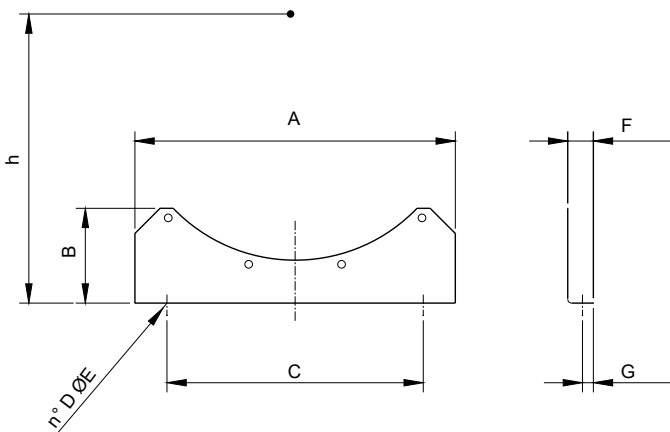


### SQ: SQUARE PANEL

Model Model	A	B	C	D	E	F	G	H	kg
SQ 80	970	910	15	8	880		4	11	7
SQ 90	1080	1030	25	16	980	830	12	11	13
SQ 100	1170	1120	25	16	1080	920	12	11	14

### FF-RI: FIKSIRANJE NOGALA

Omogućavaju fiksiranje ventilatora. Proizvedeni su od čeličnog lima i zaštićeni od atmosferskih uticaja.



### FF-RI: FIXING FEET

They allow the fan fixing. Manufactured in steel sheet and protected against the atmospheric agents.

Model Model	A	B	C	D	ØE	h	F	G	kg
FF-RI 40	450	145	1x250	2	10	285	40	16	3
FF-RI 45	450	145	1x250	2	10	310	40	16	3
FF-RI 50	500	160	2x200	3	12	380	40	16	3,6
FF-RI 56	560	170	2x230	3	12	410	40	16	5
FF-RI 63	630	170	2x240	3	12	450	40	16	6
FF-RI 71	710	180	2x275	3	12	490	40	16	6,2
FF-RI 80	800	200	2x330	3	12	540	40	16	7,6
FF-RI 90	900	340	2x370	3	12	600	40	16	12
FF-RI 100	900	370	2x370	3	12	650	40	16	12,8