

# ROOF-AM-HT

F400

## AKSIJALNI KROVNI VENTILATOR SA PRSTENOM ODVODOM ZA ODVOD DIMA PREMA STANDARDU EN 12101-3

SMOKE EXHAUST RING AXIAL ROOF FAN ACCORDING TO EN 12101-3



### APLIKACIJE

ROOF-AM-HT linija je dizajnirana za usisavanje velikih količina vazduha u krovnim instalacijama, takođe i u slučaju požara gde je propisano potreba da se garantuje usisavanje dima u okruženjima kao što su parkinzi, trgovački centri, bolnice, pozorišta, muzeji, zgrade itd. ROOF-AM-HT ventilatori su projektovani i proizvedeni u skladu sa evropskom direktivom EN 12101-3, dobivši sertifikat od ovlašćenog autonomnog sertifikacionog tela. Ova linija je pogodna za rad kontinuirano na temperaturi od 50°C i u slučaju nužde (požara) na temperaturi od: 400°C tokom 120 minuta (F400).

**Za ugradnju van požarnog odeljka.**

### DOMET

Ova linija se sastoji od 9 veličina sa impelerom od 450 do 1120 mm.

### KARAKTERISTIKE

Ova linija se odlikuje širokim okruglim mlaznicama na ulazu i izlazu, garancijom smanjenog nivoa buke i visoke efikasnosti. Pored toga, ovi ventilatori omogućavaju efikasan rad kako u režimu izduvavanja tako i u režimu usisavanja. Ova linija se odlikuje upotrebom posebnih komponenti (motor, impeler, kućište), koje se razlikuju od standardne proizvodnje, pogodnih da garantuju neophodan teški rad za koji su projektovani.

### KONSTRUKCIJA

- Prstenasto kućište sa dvostruko širokom okruglom mlaznicom i bazom otpornom na atmosferske uticaje.
- Gornji metalni poklopac otporan na atmosferske uticaje.
- Zaštitna rešetka na izlaznoj strani od čelične šipke, proizvedena u skladu sa UNI EN ISO 12499.
- Impeler sa visoko efikasnim aerodinamičkim lopaticama, promenljivim uglom nagiba u mirnom položaju, od livenog aluminijuma. Balansiranje u skladu sa UNI ISO 21940-11 normom.
- Asinhroni elektromotor, zaštita IP 55, izolovan klase H, servis S1-S2, konstrukcija u skladu sa IEC/EEC (UNEL-MEC). Standardno pogodan i sertifikovan za rad na 400°C 2 sata u slučaju požara.
- Raspored 4 (impeler direktno spojen sa vratilom motora).

### TEHNIČKE SPECIFIKACIJE

- Transportovani vazduh: čist, neabrazivan.
- Temperatura transportovanog vazduha: -20°C / +50°C u S1 radu.
- Temperatura dima: maks. +400°C 2h u S2 radu.
- Napon: trofazna verzija (T) 400V-3Ph.
- Frekvencija: 50Hz.
- Rad kao izduvni ventilator

### ACCESSORI

- Usisna gravitaciona zatvarača, samo za izduvne ventilator (GSC/V-RING-L).
- Servisni prekidač (SW-HT).
- Spoljna priključna kutija (OTB-HT).
- Usisna rešetka (FPG) obavezna za upotrebu na otvorenom vazduhu.

### NA ZAHTEV

- Verzije bez izduvne rešetke.
- Usisne verzije.
- Verzije sa kućištem i bazom od nerđajućeg čelika.
- Verzije sa ABS poklopcem do veličine 1000.
- Verzije bez poklopca

### APPLICATIONS

ROOF-AM-HT line is designed to extract large volumes of air in roof installations, also in case of fire emergency where it is prescribed the necessity to guarantee the smoke extraction in environments as car parks, commercial centers, hospitals, theatres, museums, buildings etc. ROOF-AM-HT fans have been designed and manufactured according to the European Directive EN 12101-3 obtaining the certification from an authorized autonomous certification body. This line is suitable to work in continuous at the temperature of 50°C and in case of emergency (fire) at the temperature of: 400°C for 120 minutes (F400).

**For installation outside the fire compartment.**

### RANGE

This line consists of 9 sizes with impeller from 450 up to 1120 mm.

### ADVANTAGES

This line is characterized by the wide round shaped nozzles in both inlet and outlet, warranty of reduced noise level and high efficiency. Besides these fans allow the effective operation either in exhaust or supply duty. This line is characterized by the use of special components (motor, impeller, casing), different from standard production, suitable to guarantee the essential heavy duty for which they are designed.

### CONSTRUCTION

- Ring casing with double wide round shaped nozzle, and base resistant to the atmospheric agents.
- Metal upper cover resistant to the atmospheric agents.
- Protection grid on outlet side in steel rod, manufactured according to UNI EN ISO 12499.
- Impeller with high efficiency airfoil blades, variable pitch angle in still position, in cast aluminum. Balancing according to UNI ISO 21940-11 norm.
- Asynchronous electric motor, protection IP 55, Class H insulated, service S1-S2, construction according to IEC/EEC (UNEL-MEC). Standard suitable and certified to work at 400°C 2h in case of fire.
- Arrangement 4 (impeller directly coupled to motor shaft).

### TECHNICAL SPECIFICATIONS

- Conveyed air: clean, not abrasive.
- Temperature of conveyed air: -20°C / +50°C in S1 operation.
- Temperature of smoke: max +400°C 2h in S2 operation.
- Voltage: three phase version (T) 400V-3Ph.
- Frequency: 50Hz.
- Working as exhaust fan.

### ACCESSORIES

- Inlet gravity shutter, only for exhaust fans (GSC/V-RING-L).
- Service switch (SW-HT).
- Outer terminal box (OTB-HT).
- Inlet grid (FPG) mandatory for use in free air.

### ON REQUEST

- Versions without outlet grid.
- Intake versions.
- Versions with casing and base in stainless steel.
- Versions with ABS cover up to size 1000.
- Versions without cap.

Performanse prikazane na dijagramima selekcije se odnose na vazduh na temperaturi od 15°C i 0 m nadmorske visine, i dobijene su kod tipa instalacije „C“ bez rešetke i dodatne opreme.

Performanse prikazane na dijagramima selekcije odnose se na vazduh na temperaturi od 15°C i 0 m nadmorske visine, i dobijene su kod tipa instalacije „C“ bez rešetke i dodatne opreme.

### 4 POLA / POLES (1500 RPM)

#### T: TROFAZNO / THREE-PHASE (3Ph-400V-50Hz)

Model Model	Brtina protoka- Flow rate (m <sup>3</sup> /h)	Pm (kW)	In max (A)	Mot. (H)	Lp dB(A)
454/A T	6.300	0,55	1,7	80	61
504/A T	8.000	0,55	1,7	80	64
564/A T	9.500	0,75	2,2	80	68
564/B T	10.500	1,1	2,7	90	69
634/A T	13.000	1,1	2,7	90	71
634/B T	14.000	1,5	3,8	90	72
714/A T	15.300	1,5	3,8	90	73
714/B T	16.300	2,2	5,3	100	73
804/A T	23.000	3	6,6	100	73
804/B T	26.000	4	8,4	112	73
804/C T	28.000	5,5	13	132	74
904/A T	32.500	5,5	13	132	80
904/B T	36.000	7,5	16	132	81
1004/A T	37.500	7,5	16	132	84
1004/B T	40.000	9,2	19	132	84

### 4 POLA / POLES (1500 RPM)

#### T: TROFAZNO / THREE-PHASE (3Ph-400V-50Hz)

Model Model	Brtina protoka- Flow rate (m <sup>3</sup> /h)	Pm kW	In max (A)	Mot. (H)	Lp dB(A)
1124/A T	52.000	11	21	160	87
1124/B T	58.000	15	28	160	87
1124/C T	62.000	18,5	33	180	88
1124/D T	65.500	22	39	180	89

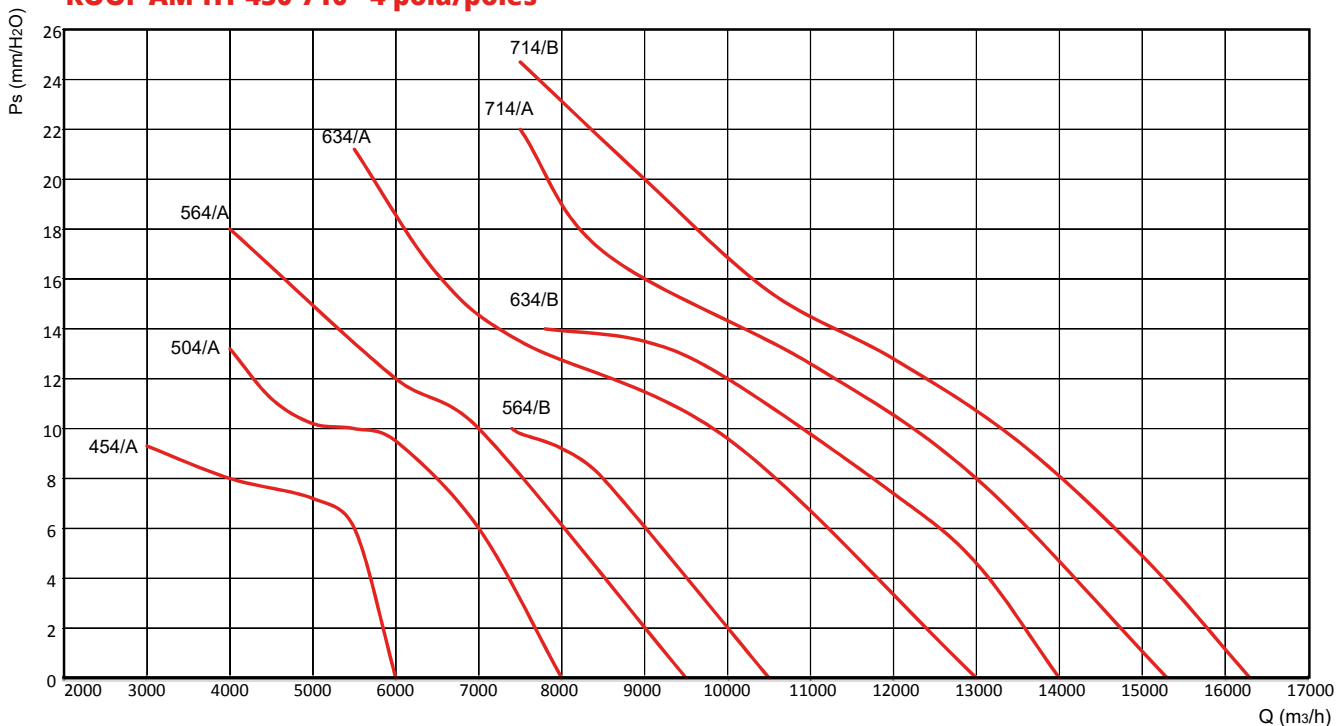
PAŽNJA: nivo zvučnog pritiska se meri u slobodnom polju na 6 m od ventilatora, u bilo kom smeru, sa ulazom u kanal i slobodnim izlazom.

TOLERANCIJE: performanse i nivoi zvučne snage unutar tolerancija dozvoljenih standardom DIN 24166 za klasu 2.

ATTENTION: sound pressure level is measured in free field at 6 m from the fan, in any direction, with ducted inlet and free outlet

TOLERANCES: performances and sound power levels within the tolerances allowed by the DIN 24166 standard for Class 2.

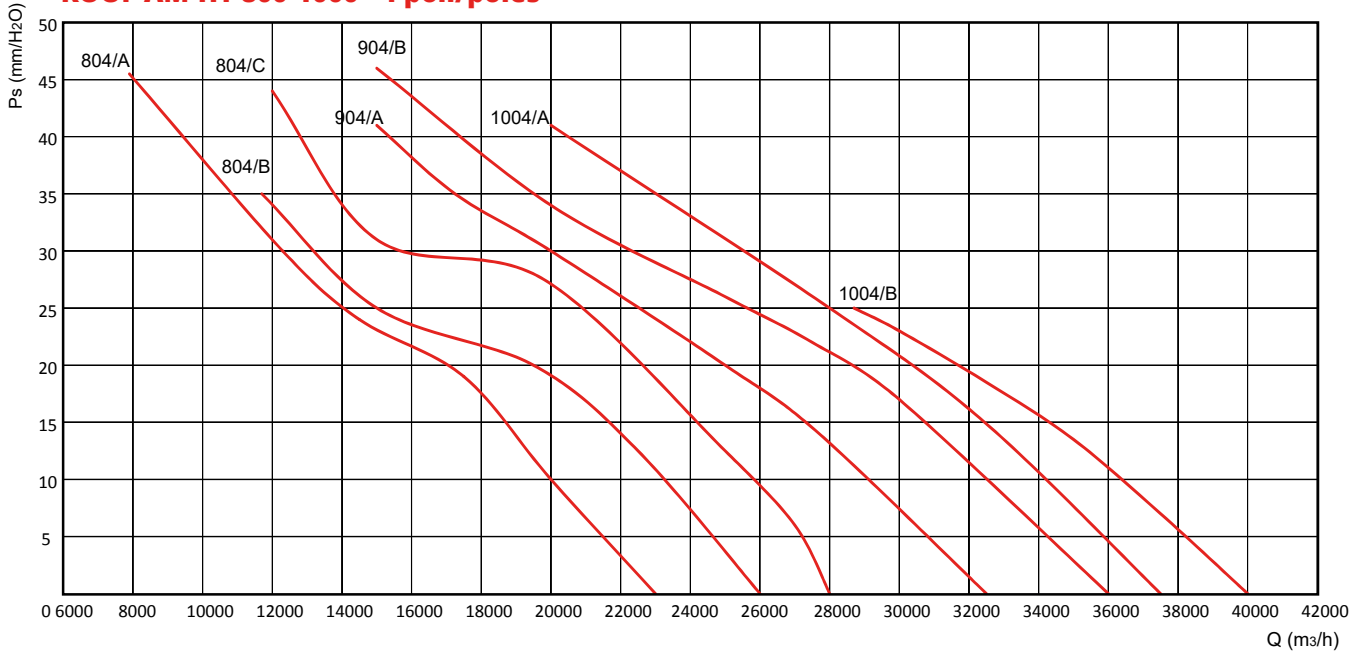
### ROOF-AM-HT 450-710 - 4 pola/poles



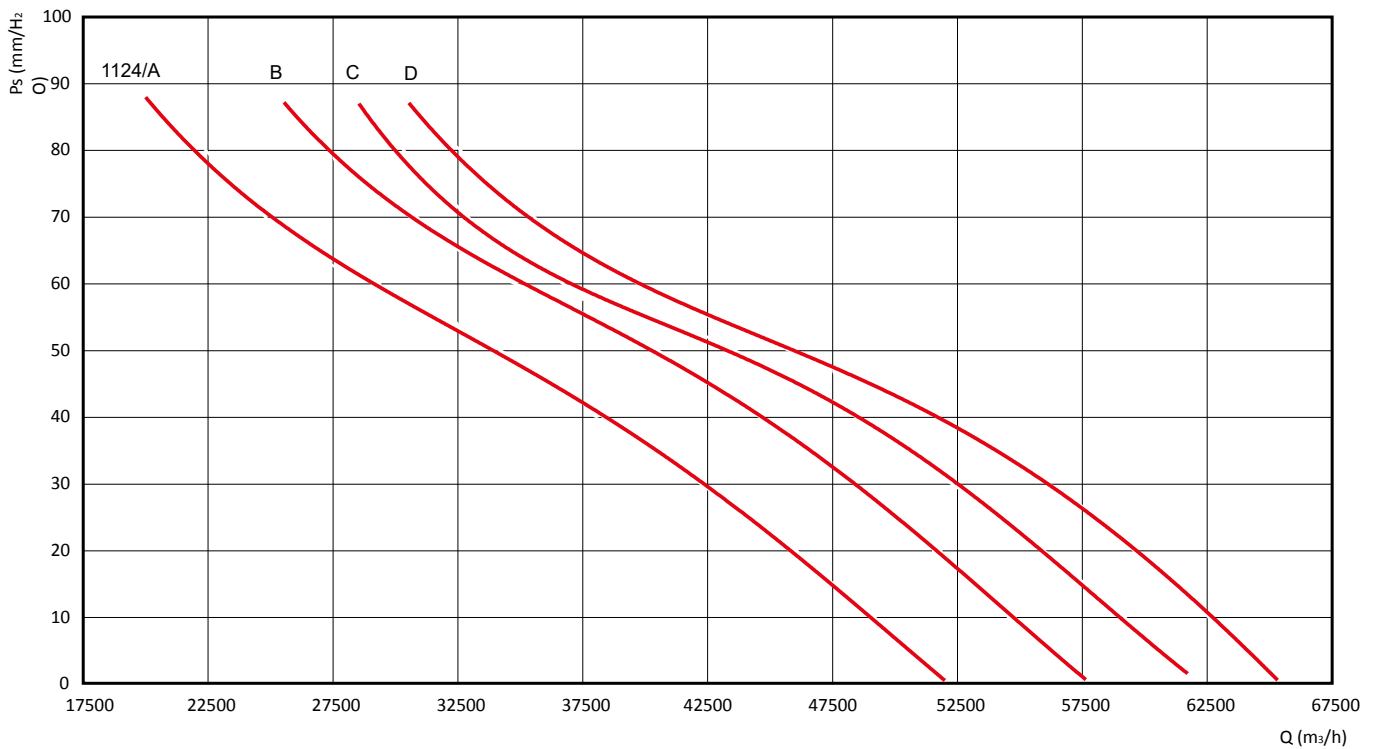
Performanse prikazane na dijagramima selekcije se odnose na vazduh na temperaturi od 15°C i 0 m nadmorske visine, i dobijene su kod tipa instalacije „C“ bez rešetke i dodatne opreme.

*Performances shown in the selection diagrams refer to air at 15°C temperature and 0 m a.s.l. altitude, and they were obtained in installation type "C" with no grid nor accessories.*

### ROOF-AM-HT 800-1000 - 4 poli/poles



### ROOF-AM-HT 1120 - 4 poli/poles

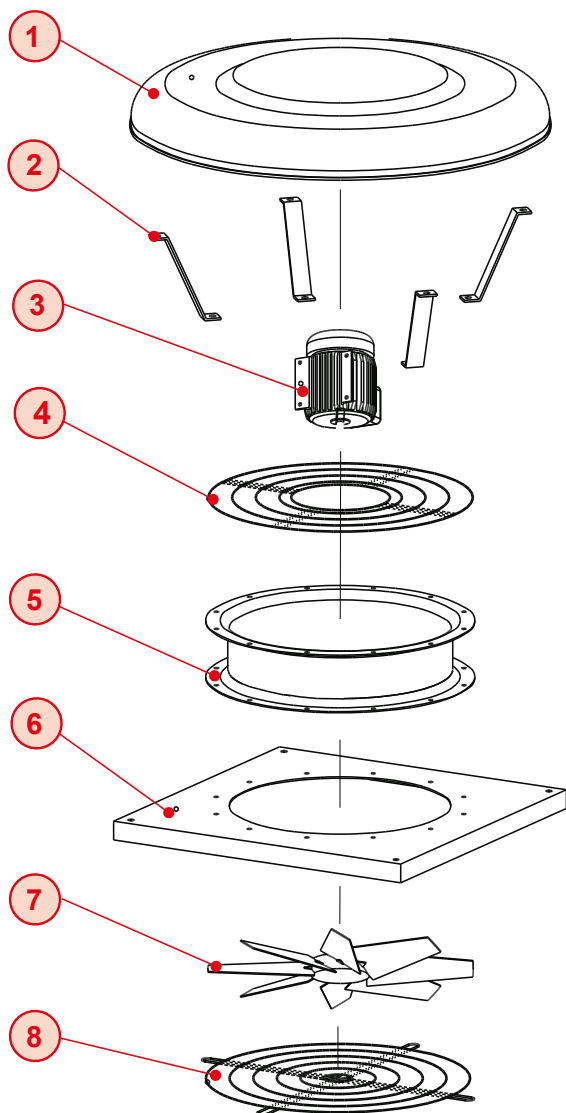
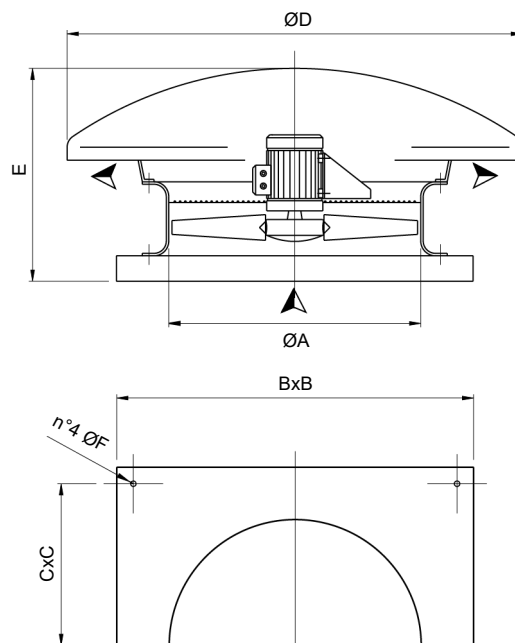


# ROOF-AM-HT

## DIMENZIJE - DIMENSIONS

Model Model	ØA	BxB	CxC	ØD	E	ØF	kg
45	460	650	600	800	450	10	45
50	510	760	710	1000	450	10	53
56	570	760	710	1000	450	10	55
63	640	930	870	1200	500	10	75
71	710	930	870	1200	500	10	86
80	815	1150	1050	1600	650	12	110
90	915	1300	1200	1600	650	12	130
100	1015	1300	1200	1600	700	12	170
112	1135	1400	1300	1880	900	12	330

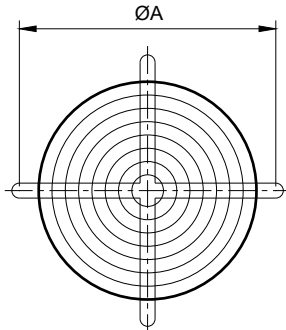
Dimenzionalne tolerancije u ± 5 mm - Dimensional tolerances ± 5 mm



- 1 Poklopac - Cover
- 2 Zaštita - Brackets
- 3 Motor - Motor
- 4 Mreža - Grid
- 5 Transporter - Ring casing
- 6 Baza - Base frame
- 7 Impler - Impeller
- 8 Mreža (pribor) obavezna za slobodan vazduh - Grid "accessory" (mandatory for free air)

**ROOF-AM-HT****PRIBOR - ACCESSORIES****FPG: ZAŠTITNI ŠTITNIK SA BOČNE STRANE IMPELERA**

Koristi se da bi se sprečio ulazak ptica ili pacova sa strane rotora i da bi se sprečio slučajni kontakt sa rotirajućim rotorom. Proizveden je od čelične šipke u skladu sa važećim bezbednosnim direktivama. (Neophodno za upotrebu na otvorenom vazduhu).

**FPG: IMPELLER SIDE PROTECTION GUARD**

To be used to avoid the intrusion, from the impeller side, of birds or rats and to preserve from the casual contact with the rotating impeller. It is manufactured in steel rod according to the actual safety directive. (Necessary for use in free air).

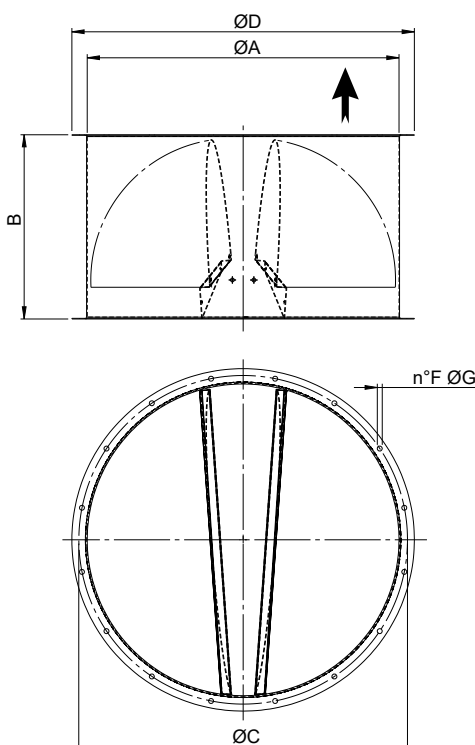
Model Model	ØA	kg
FPG45	450	1
FPG50	560	1,3
FPG56	620	1,5
FPG63	690	1,8
FPG71	770	2,5
FPG80	860	3
FPG90	970	4
FPG100	1070	5
FPG112	1320	10

**GSC/V-RING-L: KRUŽNI PRIGLUŠIVAČI ZA NATPRITISAK (prema EN 12101-3)**

- Kružne klapne sa nad pritiskom i vertikalnim protokom vazduha (V).
- Rebra klapni se pokreću protokom vazduha i zatvaraju se gravitacijom kada se ventilator isključi.
- Proizvedene sa kućištem od čeličnih limova zaštićenih od atmosferskih uticaja i pocinkovanim čeličnim rebrima.
- Apsorberi garantuju bešumno zatvaranje.
- Montiranje kroz rupe izbušene u priborima.
- Sertifikovan rad do temperature od 400°C/2h u slučaju nužde.

**GSC/V-RING-L: OVERPRESSURE CIRCULAR DAMPERS (According to EN 12101-3)**

- Overpressure circular dampers with vertical airflow (V).
- Dampers fins are operated by the airflow and close down by gravity when the fan is switched off.
- Manufactured with casing in steel sheets protected against the atmospheric agents and galvanized steel fins.
- Absorbers to guarantee a noiseless closing.
- Fixing through the holes drilled in the flanges.
- Operation certified up to a temperature of 400°C/2h in case of emergency.



Model Model	ØA	B	ØC	ØD	F	ØG	kg
45	460	300	535	560	4	10	13
50	510	350	590	620	8	10	15
56	570	350	645	680	8	10	17,5
63	640	400	720	750	8	10	21,5
71	710	450	780	815	8	12	25
80	810	500	880	915	8	12	36,4
90	910	550	980	1015	16	12	52,3
100	1015	600	1080	1115	16	12	60
112	1135	700	1226	1250	16	12	68

Gubitak pritiska gravitacionog zatvarača je oko polovine dinamičkog pritiska odgovarajućeg ventilatora.

The pressure loss of the gravity shutter is about half of the dynamic pressure of the relevant fan.