

SILENT BOX

SUPER PRIGUŠENI LINIJSKI CENTRIFUGALNI VENTILATOR

CENTRIFUGAL IN LINE
SUPER SILENT FAN



APLIKACIJE I KARAKTERISTIKE

SILENT BOKS serija se sastoji od pažljivo zvučno izolovanih ventilacionih kutija. Idealan za izvlačenje ili uvođenje vazduha kroz kružne cevi u okruženjima kao što su: javna mesta, kancelarije, prodavnice, barovi, teretane, laboratorije, kupatila, radionice, restorani. Velika debljina zvučno izolacionog premaza visoke gustine u kome se nalazi ventilator, minimalna visina "plenuma", mogućnost podešavanja broja obrtaja motora čine SILENT BOKS nezamenljivim u instalacijama gde je potreban ograničen prostor ili niski nivoi. od buke.

DOMET

Asortiman se sastoji od 5 modela sa prečnikom usta od 125 do 315 mm.

KONSTRUKCIJA

- Kutija za zaštitu od pocinkovanog lima sa zidovima izolovanim materijalom visoke gustine koji apsorbuje zvuk, debljine 50 mm.
- Kružni ulazi za povezivanje sa kanalima.
- Otvaranje panela za pristup ventilatoru.
- Centrifugalni ventilator sa dvostrukim ulazom sa napred zakrivljenim lopaticom radnog kola.
- Monofazni elektromotor, IP44 ili IP20, klasa B, sa termičkom zaštitom, elektronski podešiv u broju obrtaja.

TEHNIČKE SPECIFIKACIJE

- Preneti vazduh: čist
- Temperatura vazduha: -20°C / +40 °C
- Napajanje:
Monofazna verzija (M) 230V-50Hz.

PRIBOR

- Regulatori brzine
- Leptir kapci
- Trake za fiksiranje
- Zaštitna mreža (dodatna oprema) Obavezna upotreba sa slobodni vazduhom

APPLICATIONS AND ADVANTAGES

SILENT BOX fans are cabinet ventilation units acoustically insulated. They are ideal to exhaust or intake the air through circular ducts in installations as: public locals, offices, shops, bars, gym, laboratories, toilets, workshops, restaurants.

The wide thickness of the sound proofing material surrounding the fan, the reduced overall dimensions, the speed adjustable motor are essential characteristics in any installation requiring reduced spaces or low noise level.

Unit shall be operated indoors only.

RANGE

This line consists of 5 models with spigot diameters from 125 up to 315 mm.

CONSTRUCTION

- Galvanized steel sheet casing with panels insulated with high density sound proofing material thickness 50mm.
- Circular spigots for duct mounting.
- Easy access panel.
- Double inlet, double width forward curved blade centrifugal fan.
- Mono-phase electric motor, IP44, ISO B, with thermal protection, electronically speed adjustable.

TECHNICAL SPECIFICATIONS

- Conveyed air: clean.
- Air temperature: -20°C/+40°C.
- Voltage:
Mono-phase version (M) 230V-50Hz.

ACCESSORIES

- Speed regulators.
- Butterfly shutters.
- Hose clamps.
- Protection grid (accessory) mandatory for free air.



SILENT BOX

PERFORMANCE - PERFORMANCES

MONOFAZNO / SINGLE PHASE (230V 50HZ)

Model Model	rpm	Pm (W)	In max (A)	Lp (dB(A))	Regulatore Speed Regulator
125 M	2480	120	0.5	27	SREM1,5A/SRSM4A
160 M	2647	270	1.2	33	SREM1,5A/SRSM4A
200 M*	1550	160	0.7	29	SREM1,5A/SRSM4A
250M*	2082	265	1.1	35	SREM1,5A/SRSM4A
315M**	1210	950	4.79	59	SREM7A/SRSM7A

Rpm = Nazivna brzina motora

Pm = Snaga motora

In = Potrošnja struje

Lp = Nivo zvučnog pritiska u slobodnom polju na 3 m od ventilatora sa kanalnim otvorima.

Rpm = Nominal motor speed

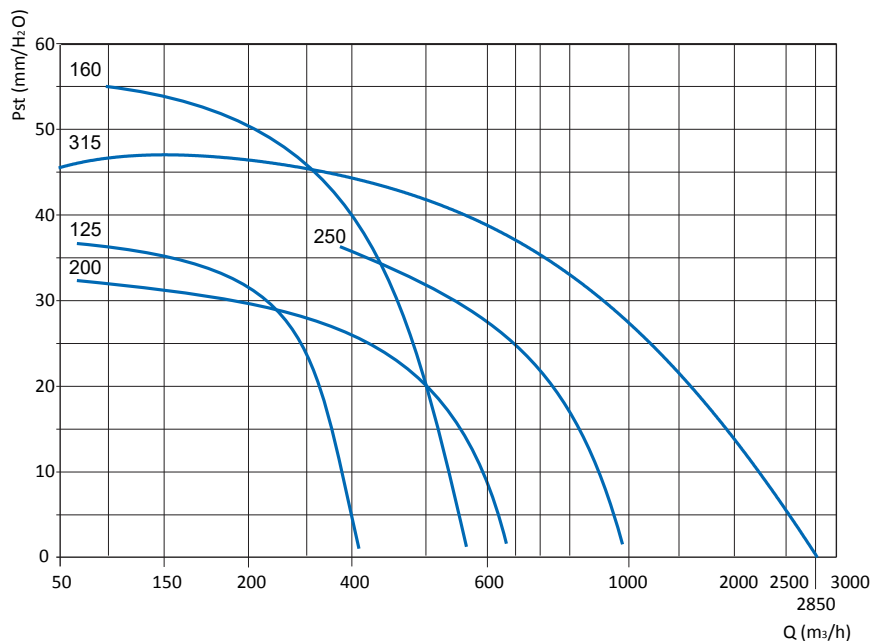
Pm = Motor power In = Absorbed current Lp = Sound pressure level in free field at 1.5 m distance from the fan, with ducted inlet and outlet.

** U slučaju postavljanja u EU, koristite samo za ekstrakcije u okruženjima u kojima NE zauzimaju isključivo ljudi (npr. profesionalne kuhinje, industrijske i poljoprivredne aplikacije, mašine, centri podataka, itd.)

**In case of EU installation use only for air changes in environments NOT solely occupied by persons (for example: professional kitchens, industrial and agricultural applications, machinery ventilation, OEM, data centers, ...).

Performanse prikazane na dijagramima odnose se na vazduh na temperaturi od 15 °C i nadmorskoj visini od 0 m. , a dobijeni su u instalacijama tipa "D" u nedostatku mreže i pribora.

Performances shown in the selection diagrams refer to air at 15°C temperature and 0 mt a.s.l. altitude, and they were obtained in installation type "D" with no grid nor accessories.



Tolerancije: aerodinamičke performanse i buka su unutar tolerancija navedenih u DIN 24166, klasa 2 * Samo za dodatnu instalaciju U.E

TOLERANCES: performances and sound power levels within the tolerances allowed by the DIN 24166 standard for Class 2.

*Only for-non European market

„Sve ventilacione jedinice, prema evropskoj regulativi 1253/14, moraju da rade pomoću varijatora brzine prema vrsti elektromotora. Indikacija pogona je prikazana u dokumentaciji same ventilacione jedinice ”

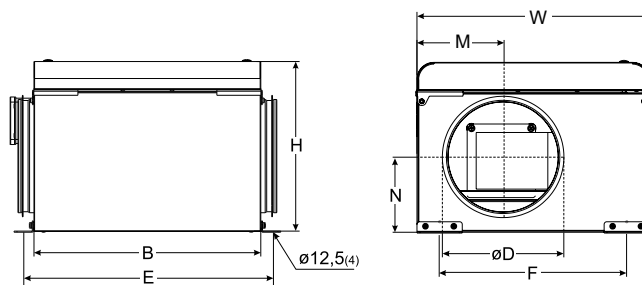
"All the ventilation units, according to EU Rule 1253/14, must be equipped with variable speed drive depending by motor type. For the suitable driver please refer to the technical documentation of the unit itself".

Dimenzije u mm - Dimensions in mm

SILENT BOX

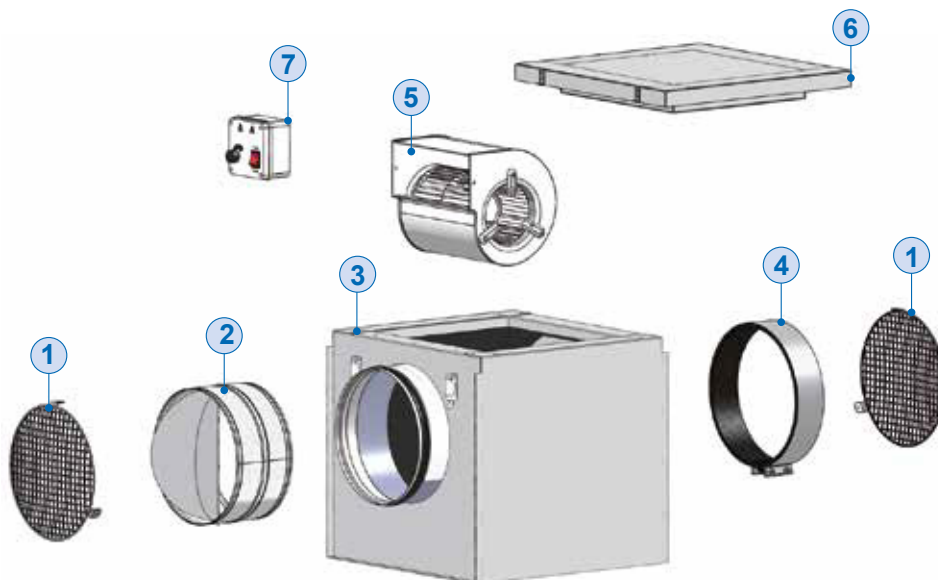
DIMENZIJE - DIMENSIONS

Model Model	B	W	H	M	N	ØD	E	F	kg
125	400	410	300	133	170	125	440	330	13
160	400	410	300	261	141	160	440	330	14
200	444	444	420	222	250	200	484	364	17
250	444	444	420	222	220	250	484	364	18
315	694	694	499	236	266	315	734	614	48



Dimenzionalne tolerancije u ± 5 mm - Dimensional tolerances ± 5 mm

- **1** Zaštitna rešetka (pribor) obavezno za slobodan vazduh libera - Protection grid (accessory) mandatory for free air
- **2** Nepovratni amortizer na leptir - Backdraught butterfly shutters
- **3** Kabinet - Cabinet
- **4** Ogrlica za fiksiranje - Hose clamp
- **5** Ventilator - Fan
- **6** Poklopac za zatvaranje - Coverpanel
- **7** Regulator brzine - Speed regulator



SILENT BOX

PRIBOR - ACCESSORIES

FA **VEZICA** **HOSE CLAMP**

Zatežoč za pričvršćenje ventilatora do kanala
To be used to connect the fan to the ducting.



RG **ZAŠTITNA MREŽA** **PROTECTION GRID**

Služi za sprečavanje slučajnog kontakta sa rotirajućim delovima
*Required to prevent accidental contact with rotation parts.
Mandatory for free air.*



SH **ZATVARAČS** **HUTTER**

Sleptir nepovratni amortizer.
Backdraught butterfly shutter.



SRE **REGULATOR BRZINE** **SPEED REGULATOR**



Centrifugalni ventilator dvostrukim usisnim otvorom i dvostrukom širinom, zakrivljenim napred.

Double inlet, double width forward curved blade centrifugal fan.

